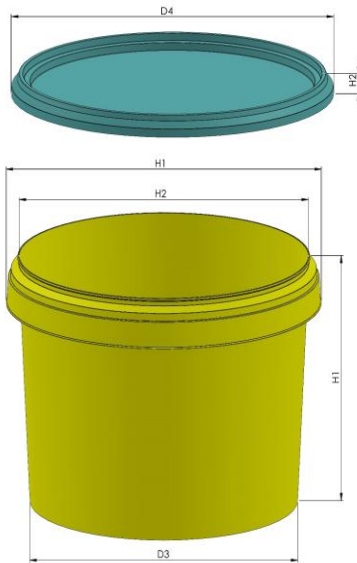


TP 1700 - 1701	3,4 LT	Dimensions	
-----------------------	---------------	-------------------	--



Shape :	Round Conical
D-1	189 mm +/- %1
D-2	179,5 mm +/- %1
D-3	158,6 mm +/- %1
D-4	183,3 mm +/- %1
H-1	158,5 mm +/- %1
H-2	9,3 mm +/- %1

Volume	
---------------	--

Brimful Volume :	3360 cc
Iso Volume :	3235 cc

Weight			
---------------	--	--	--

Weight container / pot	69 gr. +/- 3 gr.	Weight standard handle	2,8 gr. +/- 0,3 gr.
Weight standard lid	19,5 gr. +/- 1 gr.		

Performance	
--------------------	--

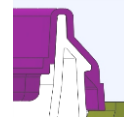
Hot filling	85-95 ° C
Hot temperatures	The material chosen has a very good heat resistance and the pails are suitable for hot filling. Notably, plastic pails become flexible when subjected to hot filling temperatures and care must be taken in relation to stacking immediately after hot filling. The TP 1700 - 1701 must be tested by the customer with the actual product before approval for use at hot temperatures.

Handle			
---------------	--	--	--

Available handle	TP 1642	Handle type	Flexible Plastic
------------------	---------	-------------	------------------

Closure System	
-----------------------	--

Lid type options	Standard Lid
Closure type	Snap-On
Protective collar	Yes
Tamper Evidence Type	Tamper Evidence tap



Decoration			
-------------------	--	--	--

Decoration Available : <input checked="" type="checkbox"/> Offset <input checked="" type="checkbox"/> IML	Decoration area offset	115 mm x 510 mm
	Decoration area IML(Pail)	140 mm x 521 mm
	Decoration area IML(Lid)	118 mm, 132 mm, 142 mm, 155 mm

Packaging (Per both lid and pail)	
--	--

	1000 X 1200
On pallet	2.520 pcs.
Pallet Height	250 cm.
Amount of pallets per 40"HC	21 pallet
Amount of pcs per 40" HC	52.920 pcs.
Amount of pallets per truck	26 pallet
Amount of pcs per truck	65.520 pcs.

Raw Material	Quality Specifications
---------------------	-------------------------------

PP			ISO 9001 - 2008 ISO 22000 - 2005
----	---	---	-------------------------------------

