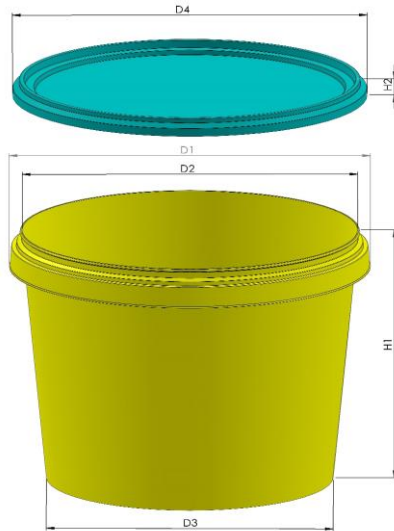


**TP 1605 - 1606**
**2250 ML LONG**
**Dimensions**


|         |                 |
|---------|-----------------|
| Shape : | Round Conical   |
| D-1     | 188,9 mm +/- %1 |
| D-2     | 176,7 mm +/- %1 |
| D-3     | 143,3 mm +/- %1 |
| D-4     | 185,8 mm +/- %1 |
| H-1     | 148,1 mm +/- %1 |
| H-2     | 9,8 mm +/- %1   |

**Volume**

|                  |         |
|------------------|---------|
| Brimful Volume : | 2670 cc |
| Iso Volume :     | 2421 cc |

**Weight**

|                        |                    |                        |                     |
|------------------------|--------------------|------------------------|---------------------|
| Weight container / pot | 68,8 gr. +/- 3 gr. | Weight standard handle | 2,8 gr. +/- 0,3 gr. |
| Weight standard lid    | 22,3 gr. +/- 1 gr. |                        |                     |

**Performance**

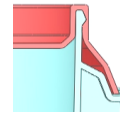
|                  |  |
|------------------|--|
| Hot filling      | 85-95 ° C  |
| Hot temperatures | The material chosen has a very good heat resistance and the pails are suitable for hot filling. Notably, plastic pails become flexible when subjected to hot filling temperatures and care must be taken in relation to stacking immediately after hot filling. The TP 1605 - 1606 must be tested by the customer with the actual product before approval for use at hot temperatures. |

**Handle**

|                  |         |             |                  |
|------------------|---------|-------------|------------------|
| Available handle | TP 1642 | Handle type | Flexible Plastic |
|------------------|---------|-------------|------------------|

**Closure System**

|                      |                     |
|----------------------|---------------------|
| Lid type options     | Standard Lid        |
| Closure type         | Snap-On             |
| Protective collar    | Yes                 |
| Tamper Evidence Type | Tamper Evidence tap |


**Decoration**

|                        |  |                           |                         |
|------------------------|--|---------------------------|-------------------------|
| Decoration Available : | <input checked="" type="checkbox"/> Offset | Decoration area offset    | 110 mm x 480 mm         |
|                        | <input checked="" type="checkbox"/> IML    | Decoration area IML(Pail) | 130 mm x 477 mm         |
|                        |  | Decoration area IML(Lid)  | 118 mm, 132 mm, 142 mm, |

**Packaging (Per both lid and pail)**

|                             |             |
|-----------------------------|-------------|
|                             | 1000 X 1200 |
| On pallet                   | 2.520 pcs.  |
| Pallet Height               | 250 cm.     |
| Amount of pallets per 40"HC | 21 pallet   |
| Amount of pcs per 40" HC    | 52.920 pcs. |
| Amount of pallets per truck | 26 pallet   |
| Amount of pcs per truck     | 65.520 pcs. |

**Raw Material**
**Quality Specifications**

|    |   |   |                                     |
|----|---|---|-------------------------------------|
| PP |  |  | ISO 9001 - 2008<br>ISO 22000 - 2005 |
|----|---|---|-------------------------------------|

