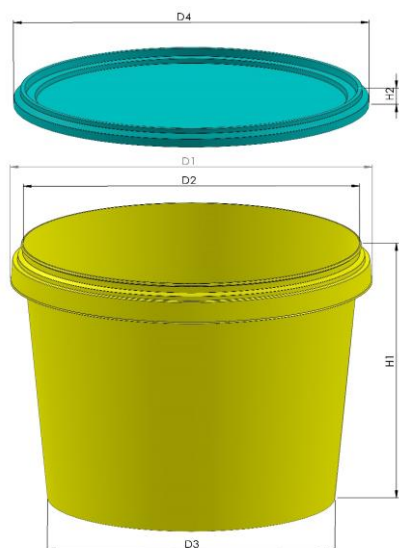


TP 1574-1575
2,5 LT TPS (2)
Dimensions


Shape :	Round Conical
D-1	189 mm +/- %1
D-2	175,3 mm +/- %1
D-3	150,1 mm +/- %1
D-4	188,5 mm +/- %1
H-1	148,5 mm +/- %1
H-2	9,8 mm +/- %1

Volume

Brimful Volume :	3015 cc
Iso Volume :	2813 cc

Weight

Weight container / pot	77,5 gr. +/- 3 gr.	Weight standard handle	2,8 gr. +/- 0,3 gr.
Weight standard lid	24 gr. +/- 1 gr.		

Performance

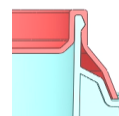
Hot filling	85-95 ° C
Hot temperatures	The material chosen has a very good heat resistance and the pails are suitable for hot filling. Notably, plastic pails become flexible when subjected to hot filling temperatures and care must be taken in relation to stacking immediately after hot filling. The TP 1574 - 1575 must be tested by the customer with the actual product before approval for use at hot temperatures.

Handle

Available handle	TP 1642	Handle type	Flexible Plastic
------------------	---------	-------------	------------------

Closure System

Lid type options	Standard Lid
Closure type	Snap-On
Protective collar	Yes
Tamper Evidence Type	Tamper Evidence tap


Decoration

Decoration Available :	<input checked="" type="checkbox"/> Offset	Decoration area offset	104 mm x 505 mm
	<input checked="" type="checkbox"/> IML	Decoration area IML(Pail)	127 mm x 507 mm
		Decoration area IML(Lid)	118 mm, 132 mm, 142 mm, 155 mm, 164 mm.

Packaging (Per both lid and pail)

	1000 X 1200
On pallet	2.520 pcs.
Pallet Height	250 cm.
Amount of pallets per 40" HC	22 pallet
Amount of pcs per 40" HC	55.440 pcs.
Amount of pallets per truck	26 pallet
Amount of pcs per truck	65.520 pcs.

Raw Material
Quality Specifications

PP


 ISO 9001 - 2008
 ISO 22000 - 2005
