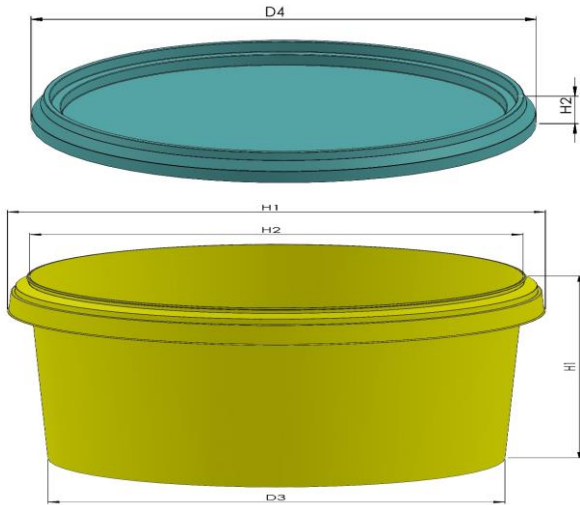


**TP 1654-1655      1 LT TAVA      Dimensions**



Shape :	Round Conical
D-1	186,5 mm +/- %1
D-2	176 mm +/- %1
D-3	169,3 mm +/- %1
D-4	184 mm +/- %1
H-1	62,6 mm +/- %1
H-2	9,7 mm +/- %1

Volume	
Brimful Volume :	1348 cc
Iso Volume :	1046 cc

**Weight**

Weight container / pot	37,5 gr. +/- 2 gr.
Weight standard lid	20 gr. +/- 1 gr.

**Performance**

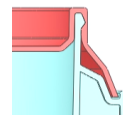
Hot filling	85-95 ° C
Hot temperatures	The material chosen has a very good heat resistance and the pails are suitable for hot filling. Notably, plastic pails become flexible when subjected to hot filling temperatures and care must be taken in relation to stacking immediately after hot filling. The TP 1681-1682 must be tested by the customer with the actual product before approval for use at hot temperatures.

**Handle**

Available handle	Handle type	Flexible Plastic
------------------	-------------	------------------

**Closure System**

Lid type options	Standard Lid
Closure type	Snap-On
Protective collar	Yes
Tamper Evidence Type	Tamper Evidence tap



**Decoration**

Decoration Available :	<input checked="" type="checkbox"/> Offset	Decoration area offset	45mm * 530mm
	<input checked="" type="checkbox"/> IML	Decoration area IML(Pail)	45mm * 530mm
		Decoration area IML(Lid)	145 mm

**Packaging (Per both lid and pail)**

	1000 X 1200
On pallet	3.600 pcs.
Pallet Height	250 cm.
Amount of pallets per 40"HC	21 pallet
Amount of pcs per 40" HC	75.600 pcs.
Amount of pallets per truck	26 pallet
Amount of pcs per truck	93.600 pcs.

**Raw Material      Quality Specifications**

PP			ISO 9001 - 2008 ISO 22000 - 2005			
----	--	--	-------------------------------------	--	--	--