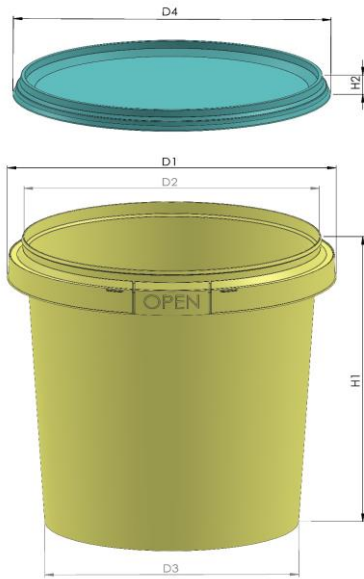


TP 1681-1682 1 LT (3) Dimensions



Shape :	Round Conical
D-1	131,7 mm +/- %1
D-2	122,5 mm +/- %1
D-3	105,3 mm +/- %1
D-4	129 mm +/- %1
H-1	131,5 mm +/- %1
H-2	9,5 mm +/- %1

Volume	
Brimful Volume :	1300 cc
Iso Volume :	1213 cc

Weight

Weight container / pot	36,4 gr. +/- 2 gr.	Weight standard handle	1,7 gr. +/- 0,3 gr.
Weight standard lid	10,3 gr. +/- 1 gr.		

Performance

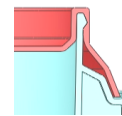
Hot filling	85-95 ° C
Hot temperatures	The material chosen has a very good heat resistance and the pails are suitable for hot filling. Notably, plastic pails become flexible when subjected to hot filling temperatures and care must be taken in relation to stacking immediately after hot filling. The TP 1681-1682 must be tested by the customer with the actual product before approval for use at hot temperatures.

Handle

Available handle	Handle type	Flexible Plastic
------------------	-------------	------------------

Closure System

Lid type options	Standard Lid
Closure type	Snap-On
Protective collar	Yes
Tamper Evidence Type	Tamper Evidence tap





Decoration

Decoration Available :	<input checked="" type="checkbox"/> Offset	Decoration area offset	113 mm * 355 mm
	<input checked="" type="checkbox"/> IML	Decoration area IML(Pail)	113 mm * 355 mm
		Decoration area IML(Lid)	110 mm

Packaging (Per both lid and pail)

	1000 X 1200
On pallet	4.860 pcs.
Pallet Height	250 cm.
Amount of pallets per 40"HC	21 pallet
Amount of pcs per 40" HC	102.060 pcs.
Amount of pallets per truck	26 pallet
Amount of pcs per truck	126.360 pcs.

Raw Material Quality Specifications

PP   ISO 9001 - 2008
ISO 22000 - 2005

