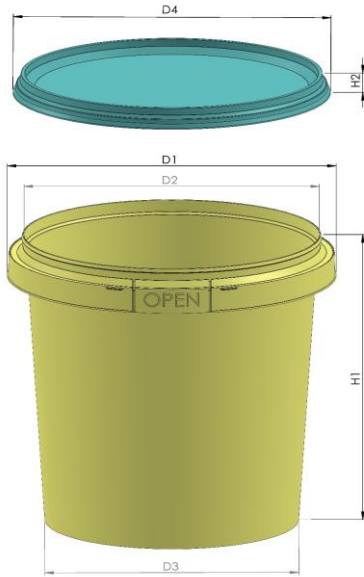


TP 1706 - 1707

Dimensions



Shape :	Round Conical
D-1	125,6 mm +/- %1
D-2	113 mm +/- %1
D-3	97,9 mm +/- %1
D-4	120,2 mm +/- %1
H-1	125 mm +/- %1
H-2	8,6 mm +/- %1

Volume

Brimful Volume :	1037 cc
Iso Volume :	980 cc

Weight

Weight container / pot	28 gr. +/- 2 gr.	Weight standard handle	1,6 gr. +/- 0,3 gr.
Weight standard lid	8,5 gr. +/- 1 gr.		

Performance

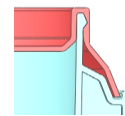
Hot filling	85-95 ° C
Hot temperatures	The material chosen has a very good heat resistance and the pails are suitable for hot filling. Notably, plastic pails become flexible when subjected to hot filling temperatures and care must be taken in relation to stacking immediately after hot filling. The TP 1681-1682 must be tested by the customer with the actual product before approval for use at hot temperatures.

Handle

Available handle	Handle type	Flexible Plastic
------------------	-------------	------------------

Closure System

Lid type options	Standard Lid
Closure type	Snap-On
Protective collar	Yes
Tamper Evidence Type	Tamper Evidence tap



Decoration

Decoration Available :	<input checked="" type="checkbox"/> Offset	Decoration area	105 mm * 245 mm
	<input checked="" type="checkbox"/> IML	Decoration area IML(Pail)	105 mm * 245 mm
		Decoration area IML(Lid)	103,5 mm

Packaging (Per both lid and pail)

	1000 X 1200
On pallet	5.940 pcs.
Pallet Height	250 cm.
Amount of pallets per 40"HC	21 pallet
Amount of pcs per 40" HC	124.740 pcs.
Amount of pallets per truck	26 pallet
Amount of pcs per truck	154.440 pcs.

Raw Material

PP



ISO 9001 - 2008
ISO 22000 - 2005

